

CLERK'S RECORDING CERTIFICATE:

I, MARSHA EWING, CLERK OF THE CIRCUIT COURT OF MARTIN COUNTY, FLORIDA, HEREBY CERTIFY THAT THIS PLAT WAS FILED FOR RECORD IN PLAT BOOK 15, PAGE 51, MARTIN COUNTY, FLORIDA, PUBLIC RECORDS, THIS 28 DAY OF Feb., 2003.

MARSHA EWING, CLERK CIRCUIT COURT MARTIN COUNTY, FLORIDA

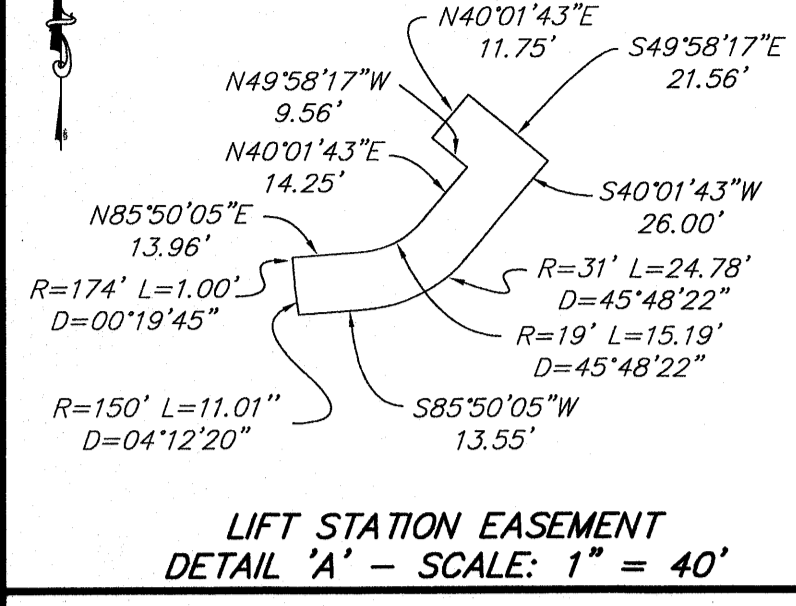
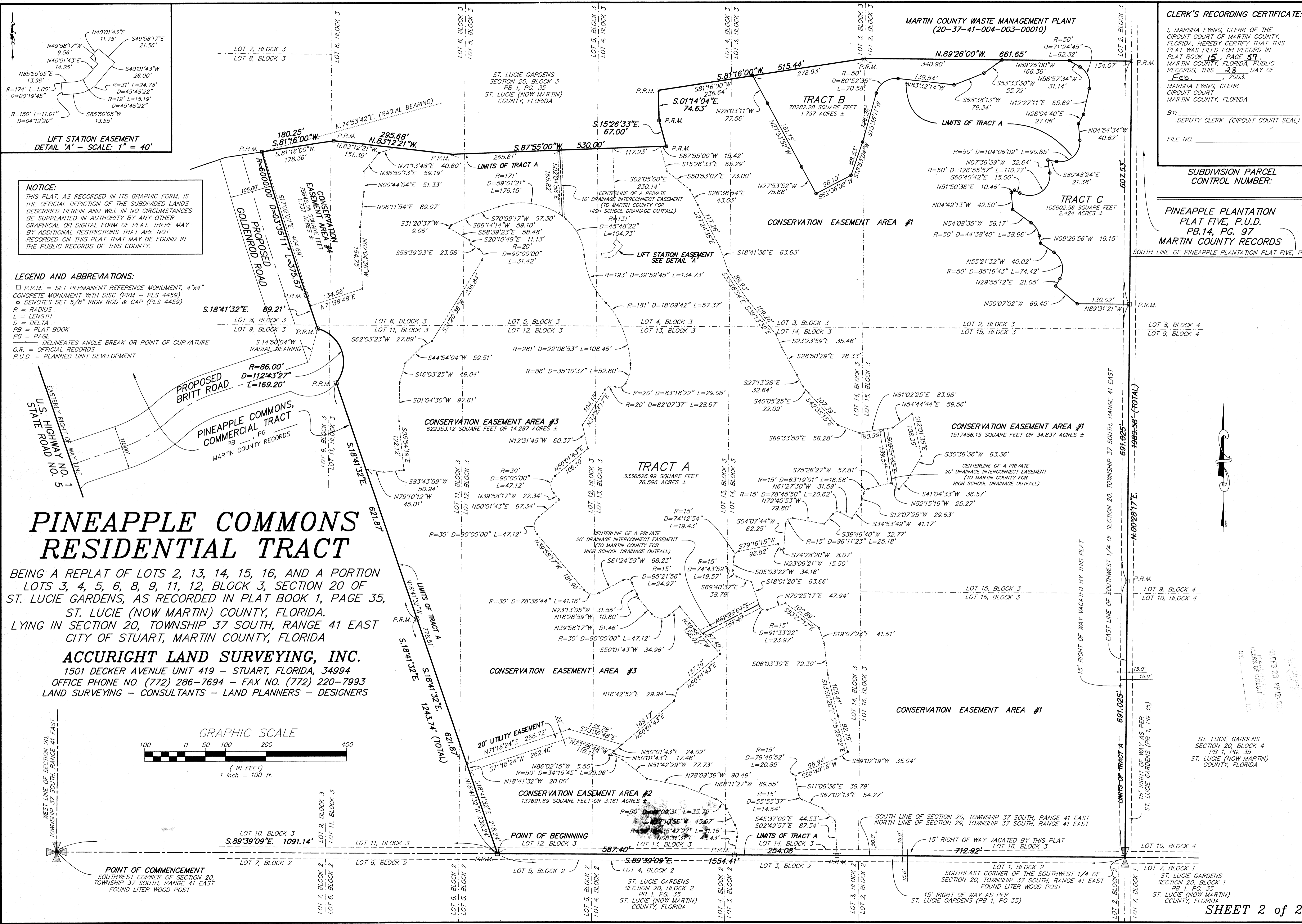
BY: DEPUTY CLERK (CIRCUIT COURT SEAL)

FILE NO. _____

SUBDIVISION PARCEL CONTROL NUMBER: _____

PINEAPPLE PLANTATION PLAT FIVE, P.U.D. PB.14, PG. 97 MARTIN COUNTY RECORDS

SOUTH LINE OF PINEAPPLE PLANTATION PLAT FIVE, PUD



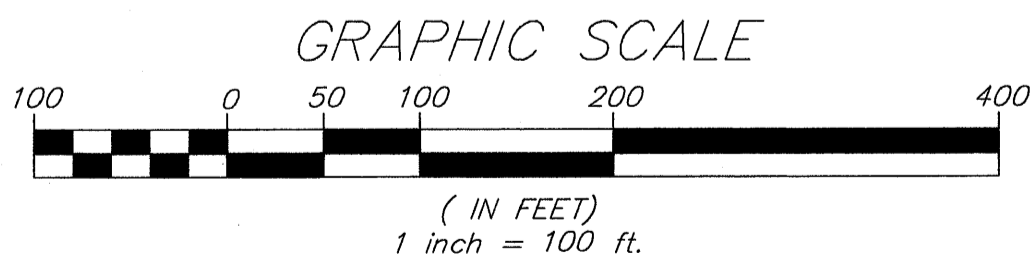
NOTICE: THIS PLAT, AS RECORDED IN ITS GRAPHIC FORM, IS THE OFFICIAL DEPICTION OF THE SUBDIVIDED LANDS DESCRIBED HEREIN AND WILL IN NO CIRCUMSTANCES BE SUPPLANTED IN AUTHORITY BY ANY OTHER GRAPHICAL OR DIGITAL FORM OF PLAT...

LEGEND AND ABBREVIATIONS: P.R.M. = SET PERMANENT REFERENCE MONUMENT, 4"x4" CONCRETE MONUMENT WITH DISC (P.R.M. - PLS 4459) DENOTES SET 5/8" IRON ROD & CAP (PLS 4459) R = RADIUS L = LENGTH D = DELTA PB = PLAT BOOK PG = PAGE DELINEATES ANGLE BREAK OR POINT OF CURVATURE O.R. = OFFICIAL RECORDS P.U.D. = PLANNED UNIT DEVELOPMENT

PINEAPPLE COMMONS RESIDENTIAL TRACT

BEING A REPLAT OF LOTS 2, 13, 14, 15, 16, AND A PORTION LOTS 3, 4, 5, 6, 8, 9, 11, 12, BLOCK 3, SECTION 20 OF ST. LUCIE GARDENS, AS RECORDED IN PLAT BOOK 1, PAGE 35, ST. LUCIE (NOW MARTIN) COUNTY, FLORIDA. LYING IN SECTION 20, TOWNSHIP 37 SOUTH, RANGE 41 EAST CITY OF STUART, MARTIN COUNTY, FLORIDA

ACCURIGHT LAND SURVEYING, INC. 1501 DECKER AVENUE UNIT 419 - STUART, FLORIDA, 34994 OFFICE PHONE NO. (772) 286-7694 - FAX NO. (772) 220-7993 LAND SURVEYING - CONSULTANTS - LAND PLANNERS - DESIGNERS



WEST LINE OF SECTION 20, TOWNSHIP 37 SOUTH, RANGE 41 EAST

POINT OF COMMENCEMENT SOUTHWEST CORNER OF SECTION 20, TOWNSHIP 37 SOUTH, RANGE 41 EAST FOUND LITER WOOD POST

ST. LUCIE GARDENS SECTION 20, BLOCK 4 PB 1, PG 35 ST. LUCIE (NOW MARTIN) COUNTY, FLORIDA